



*Rock outcroppings are a unique feature on the campus that should be incorporated into the landscape design of new projects.*



*The campus topography allows for dramatic pedestrian experiences moving throughout the campus.*



*Maintaining narrow bands of existing woods helps to separate campus areas into separate "outdoor rooms".*



*Inviting outdoor gathering areas such as this outside the Career Programs Building provide incentives for students to stay on campus between classes and create a more vibrant campus experience.*










*The valley landform located adjacent to the Learning Resource Center and Student Center is a dramatic open space. As the campus develops, this space should be reinforced with additional pathways and program elements along the edges.*



*Views from the Student Center are dramatic. As the Student Center expands, new outdoor gathering spaces should be provided with pathway connections to the adjacent valley.*

**LEGEND**

-  EXISTING TREE COVER
-  OPEN LAWN
-  ATHLETIC FIELD
-  EXISTING BUILDING
-  PLANNED BUILDING
-  ROAD / PARKING LOT
-  WALKWAY



**Exhibit 1: Existing Conditions**

**Hagerstown Community College  
CAMPUS DEVELOPMENT PLAN**

June 15, 2010

**MAHAN RYKIEL ASSOCIATES  
TRIAD ENGINEERING, INC.**

**LEGEND**

- EXISTING BUILDING
- PLANNED BUILDING
- ROAD / PARKING LOT
- WALKWAY
- WETLANDS
- STORMWATER MANAGEMENT
- STREAM BUFFER
- POTENTIAL SINKHOLE LOCATIONS
- SLOPES 15-25%
- SLOPES GREATER THAN 25%
- EXISTING TREE COVER
- FOREST CONSERVATION AREA
- PRIORITY FOREST COVER
- HISTORIC HEDGEROW LOCATION

**Exhibit 2: Regulatory & Environmental Constraints**

**Hagerstown Community College  
CAMPUS DEVELOPMENT PLAN**

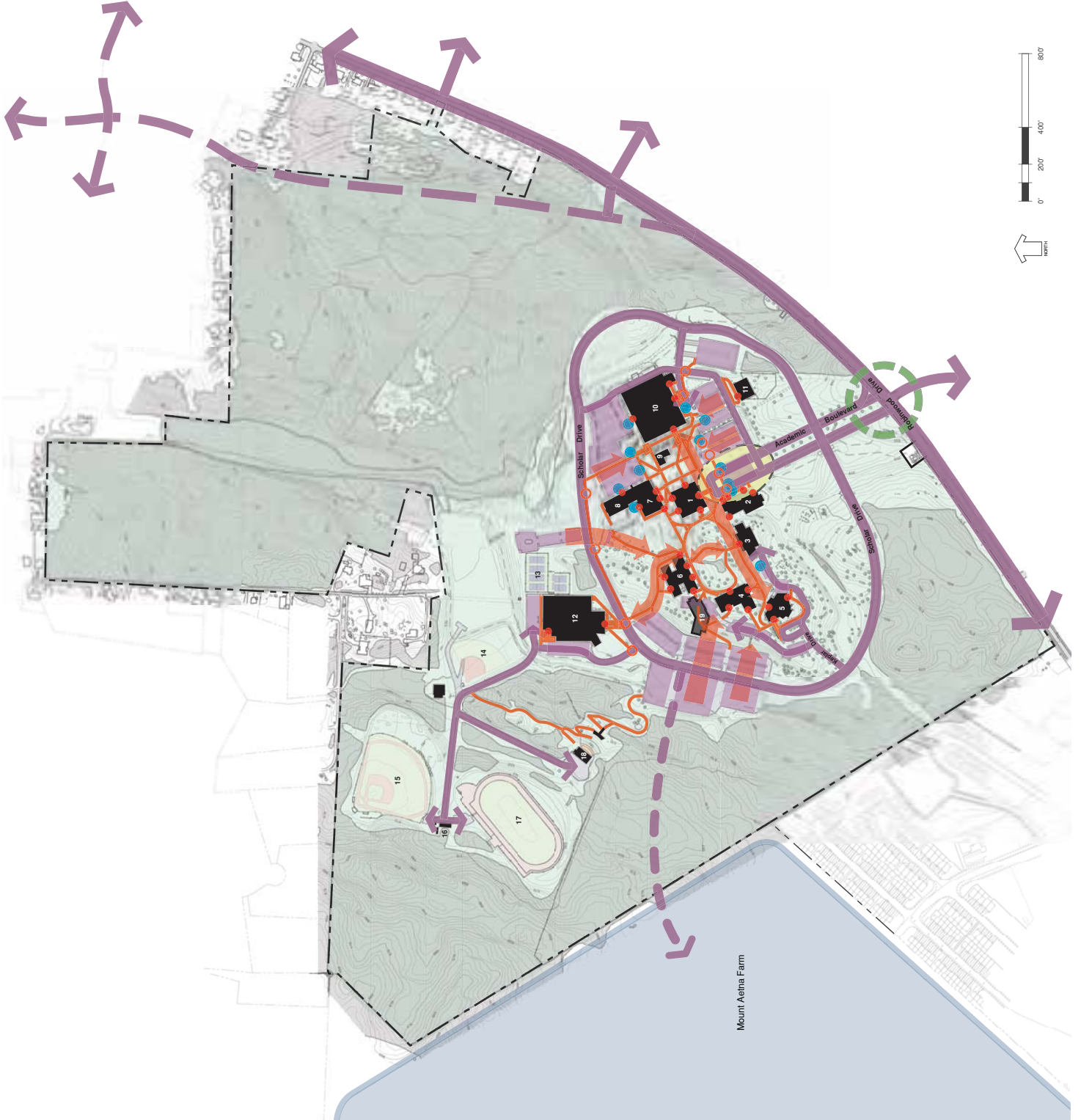
June 15, 2010

MAHAN RYKIEL ASSOCIATES  
TRIAD ENGINEERING, INC.



**LEGEND**

- EXISTING BUILDING
- PLANNED BUILDING
- VEHICULAR CIRCULATION
- POTENTIAL FUTURE REALIGNMENT OF ROBINWOOD DRIVE
- PLANNED SECOND CAMPUS ROAD CONNECTION
- PEDESTRIAN CIRCULATION
- SIGNIFICANT PEDESTRIAN MOVEMENT
- PRIMARY CAMPUS ENTRANCE
- BUILDING ENTRANCE
- CROSSWALK
- HANDICAPPED PARKING
- DROP-OFF ZONE



**Exhibit 3: Existing Circulation & Parking**

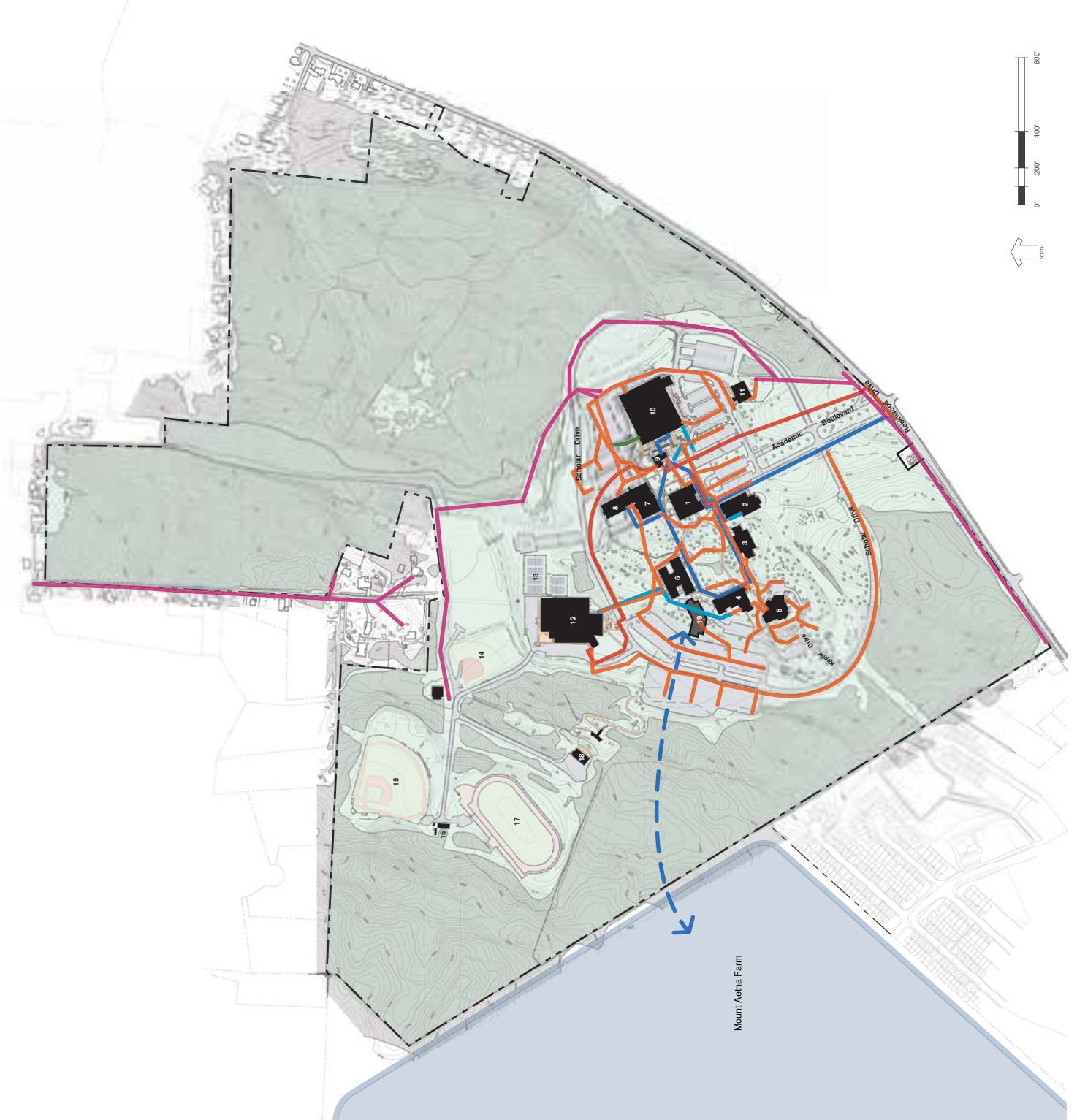
Hagerstown Community College  
**CAMPUS DEVELOPMENT PLAN**

June 15, 2010

MAHAN RYKIEL ASSOCIATES  
 TRIAD ENGINEERING, INC.

**LEGEND**

- EXISTING BUILDING
- PLANNED BUILDING
- ROAD / PARKING LOT
- WALKWAY
- GAS
- UNDERGROUND ELECTRIC
- OVERHEAD ELECTRIC
- WATER
- FUTURE WATER LINE REQUIRED  
ALONG ALIGNMENT OF SECOND  
CAMPUS ENTRANCE
- UNDERGROUND TELEPHONE
- FIBER OPTIC



**Exhibit 4: Utility Infrastructure**

**Hagerstown Community College  
CAMPUS DEVELOPMENT PLAN**

June 15, 2010

**MAHAN RYKIEL ASSOCIATES  
TRIAD ENGINEERING, INC.**