

Mammography



What does a mammographer do?

Mammographers use sophisticated low-dose x-ray equipment to produce images of the breast. A mammographer's responsibilities include performing breast imaging procedures, recording a patient's clinical history, preparing patients for procedures, operating and evaluating breast images for technical quality, and assisting with interventional procedures and quality control tests.

Where do mammographers work?

Mammographers work in hospitals and outpatient care centers under the direct supervision of board-certified radiologists. Most full-time mammographers work about 40 hours per week. This may include evening and weekend hours.

What skills are needed to excel in this profession?

- Good critical thinking skills
- Good written and verbal communication skills
- The ability to work well with others and care for patients
- A professional attitude and appearance

Note to students: You are entering a profession that operates 24 hours a day, 7 days a week, and 365 days a year. Work shifts include day, evening, and night hours.

Why should I choose HCC?

- Completion of the program will equip the student with the necessary clinical requirements needed to apply for the ARRT certification exam in mammography
- HCC is the only community college in the state of Maryland to offer students the opportunity to acquire mammography clinical requirements and become ARRT registry eligible
- The RAD 216 (Mammography for Radiographers) course provides the technologist with the 40 hours of initial mammography education required by the ARRT and MQSA if the radiographer is going to have on-the-job training
- Clinical education is completed in state-of-the-art health care facilities



Program Overview

A letter of recognition in mammography is being offered to radiographers who participate in the RAD 216 course (Mammography for Radiographers) and RAD 216A (Mammography Practicum I). The clinical practicum allows students to obtain specific clinical education and experience requirements that are needed for the student to be able to sit for the ARRT certification exam. Before the student can participate in the clinical practicum, they must be a registered radiographer in good standing with the ARRT and the student must document 40 hours of training/education specific to mammography under the supervision of a qualified instructor.

What are the admission requirements?

Students need to apply to the college, submit official transcripts, and apply to the Mammography Program by August 15 for the fall semester and December 15 for the spring semester. The program is open to current ARRT certified radiographers and students enrolled in the sophomore year of a JRCERT accredited program. All certified technologists must submit a copy of their current ARRT certification card and Maryland state license, along with a current resume/curriculum vitae to the Office of Admissions and Enrollment

PROGRAM OPTIONS

- Letter of Recognition, Mammography

CAREER OUTLOOK

MEDIAN SALARY

\$75K

for Radiologic and MRI Technologists

EMPLOYMENT



254,000 jobs in U.S.
9% growth in the next 10 years

About 20,800 openings for radiologic and MRI technologists are projected each year, on average, over the decade. Many of those openings are expected to result from the need to replace workers who transfer to different occupations or exit the labor force, such as to retire.

(source: www.bls.gov/ooh)

Management. Admission requirements for the clinical education component of the Mammography Program include satisfactory completion of a health form and immunizations, drug screen, background checks through fingerprinting, and submitting a valid American Heart Association Healthcare Provider card. Students who have been out of the patient care environment for more than two years may be considered for admission upon successful completion of Patient Care for Advanced Medical Imagers (RAD-213) with a minimum grade of 75 percent or higher.

What are the program requirements?

All mammography students must:

1. Receive a minimum grade of 75% (C grade) in each mammography course.
2. Meet program competency requirements.
3. Enrollment in RAD 216A must be within one year of completion of RAD 216.
4. Clinical education coursework must be completed within two years to satisfy program requirements and ARRT certification eligibility requirements.

5. Students planning to enroll in the clinical education component of the program must meet with the program coordinator no later than one month prior to the start of the academic semester.

Students who receive a final mark of unsatisfactory in the clinical laboratory or clinical experience, despite a passing theory grade, will not be permitted to progress in the mammography program and will receive a final grade of "F" for the course and are not eligible for readmission.

Students who do not meet program, course, technical, health and radiation standards that result in termination from the mammography program by the College, are not eligible for readmission. This includes students who cannot meet safety standards, and students who violate the college's Honor Code and Standards of Conduct, the radiography program's Standards of Conduct, and the American Registry of Radiologic Technologists Standards of Ethics.

What are the requirements and expectations for the clinical component?

Students must satisfactorily complete the following: all requirements noted on the health form, a drug screen, and a background check done through digital fingerprinting. Students must also provide evidence of a valid American Heart Association Healthcare Provider certification, ARRT certification, and state licensing. Students will also be required to obtain an additional eight hours of documented education specific to digital mammography. This must be completed before the student will be permitted to begin clinical. The course that the student will need to complete is designated by the mammography program coordinator. Students are required to attend their clinical rotation site a minimum of 120 hours per se-

mester. The student's clinical schedule will be determined by the student and the clinical site they're attending; therefore, clinical education schedules will vary based on the schedule that is established with the designated clinical site. The student will complete their clinical experience at a clinical site designated by the college.

Additional information about admission and program requirements including criminal background checks, drug screening, readmission to the mammography program, and transferring from another college or mammography program can be found at www.hagerstowncc.edu/medical-imaging.

Accreditation and certification eligibility

The practicum follows the accreditation and national certification guidelines of the American Registry of Radiologic Technologists (ARRT). Upon completion of the education and clinical requirements, the student is eligible to sit for the ARRT national certification exam in mammography. The professional certification designation of the mammographer is R.T. (R) (M) (ARRT), Registered Technologist, Radiography and Mammography.

Ionizing pregnancy and radiation

Reporting of pregnancy to program officials is voluntary on the part of the student. Regulatory Guide 8.13, Instruction Concerning Prenatal Radiation Exposure, (www.nrc.gov) published by the United States Regulatory Commission provides information and guidelines.

Technical Standards

There are technical standards and skill requirements which students are expected to possess and demonstrate in order to be successful in this program. More information on these standards can be found at www.hagerstowncc.edu/medical-imaging.

Vaccine Requirements

Several immunizations are required as part of your health documentation, including: HEP B 3 vaccine series AND Positive immunity titer, Tetanus (Tdap) within last 10 years, Varicella 2 vaccine series AND positive immunity titer, MMR 2 vaccine series AND positive immunity titer, and the Flu vaccine (fall and spring), and the COVID-19 vaccine.

Since many individuals fail to maintain immunity over time, you may be required to repeat vaccination series/ receive a booster in order to demonstrate positive immunity. Positive immunity titers are required to proceed with Clinical or Externship rotations in all Health Sciences Programs. It is the student's responsibility to verify immunity prior to the start of the program and take the necessary steps to ensure positive immunity by the health documentation deadline provided to each cohort.

Other Requirements

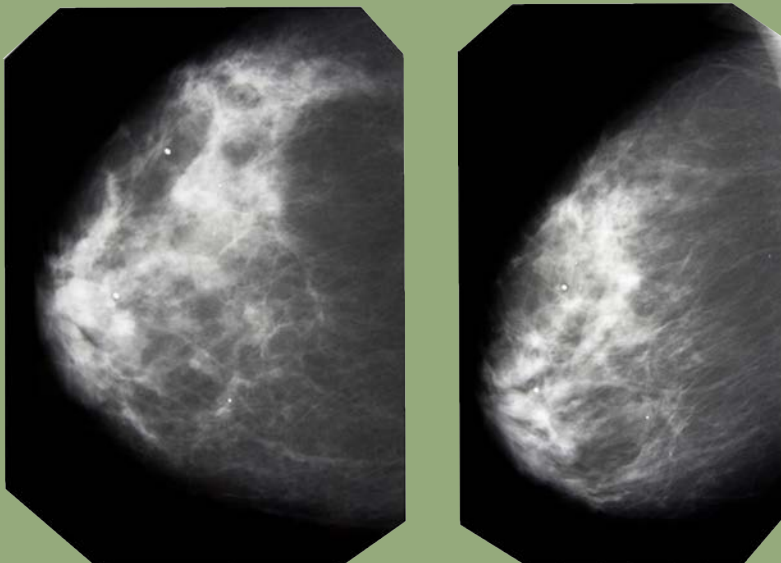
An American Heart Association (AHA) Basic Life Support is required for healthcare providers (the AHA version is required for your licensure exams).

Letter of Recognition

Mammography

Program Requirements	5 Credits
RAD 216 Mammography for Radiographers	3
RAD 216AC Mammography Practicum I	2

Letter of Recognition Requirement..... 5



Contact Information:

Michelle McDaniel
Assistant Professor
Medical Imaging Programs
240-500-2549
mlmcdaniel@hagerstowncc.edu

Recommended Professional Organizations

American Society of Radiologic Technologists (ASRT):
www.asrt.org

The American Registry of Radiologic Technologists (ARRT):
www.arrt.org

